

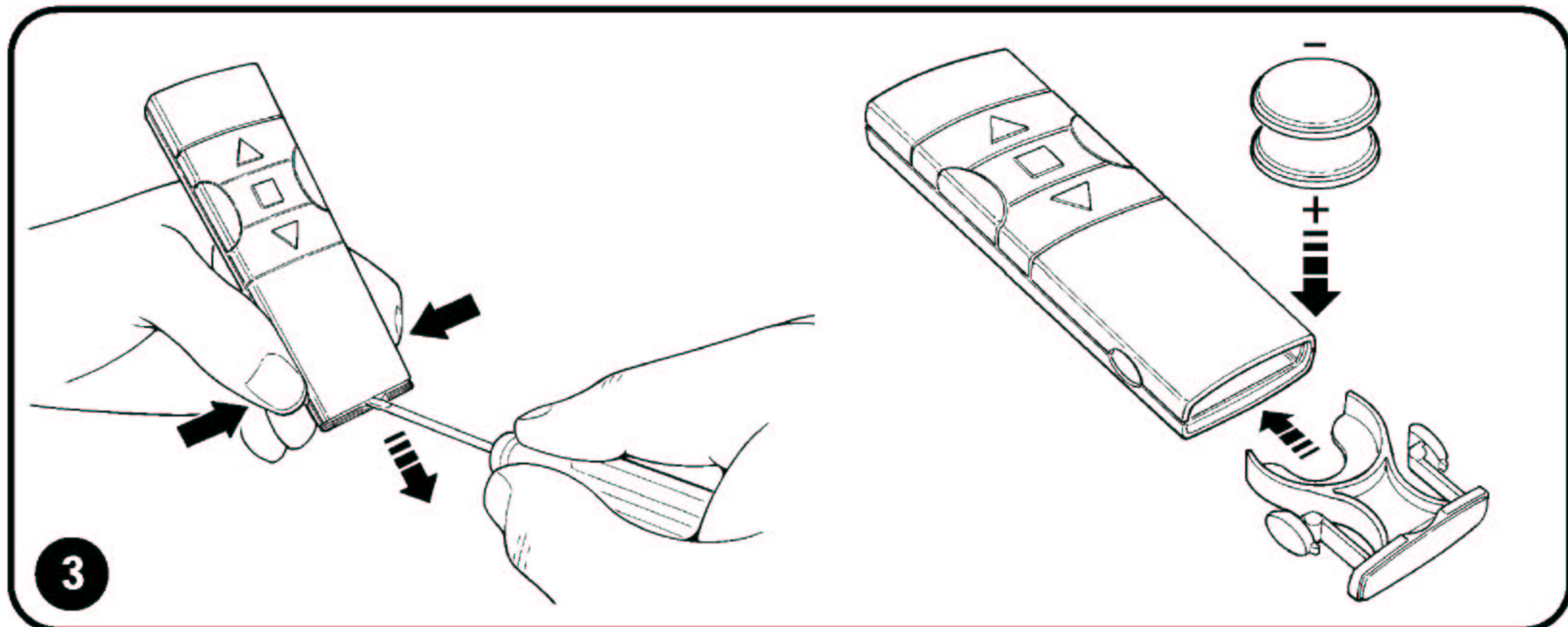
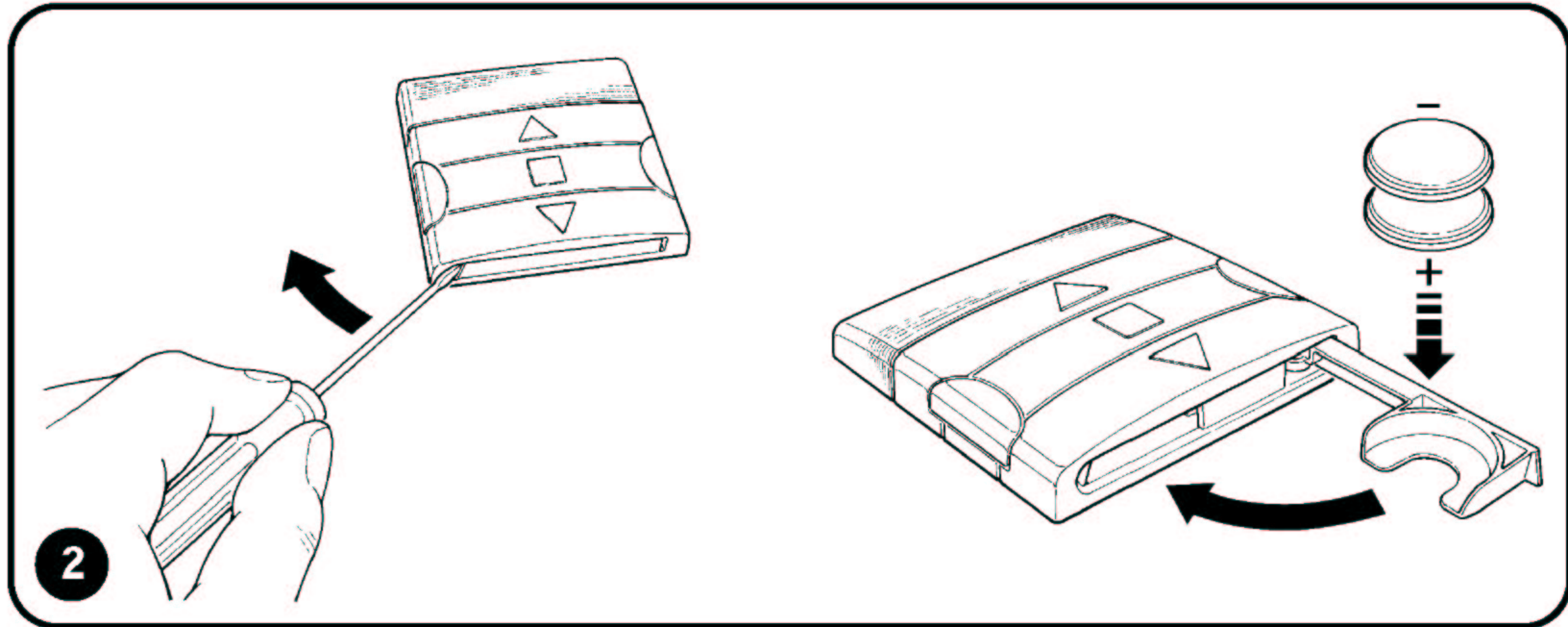
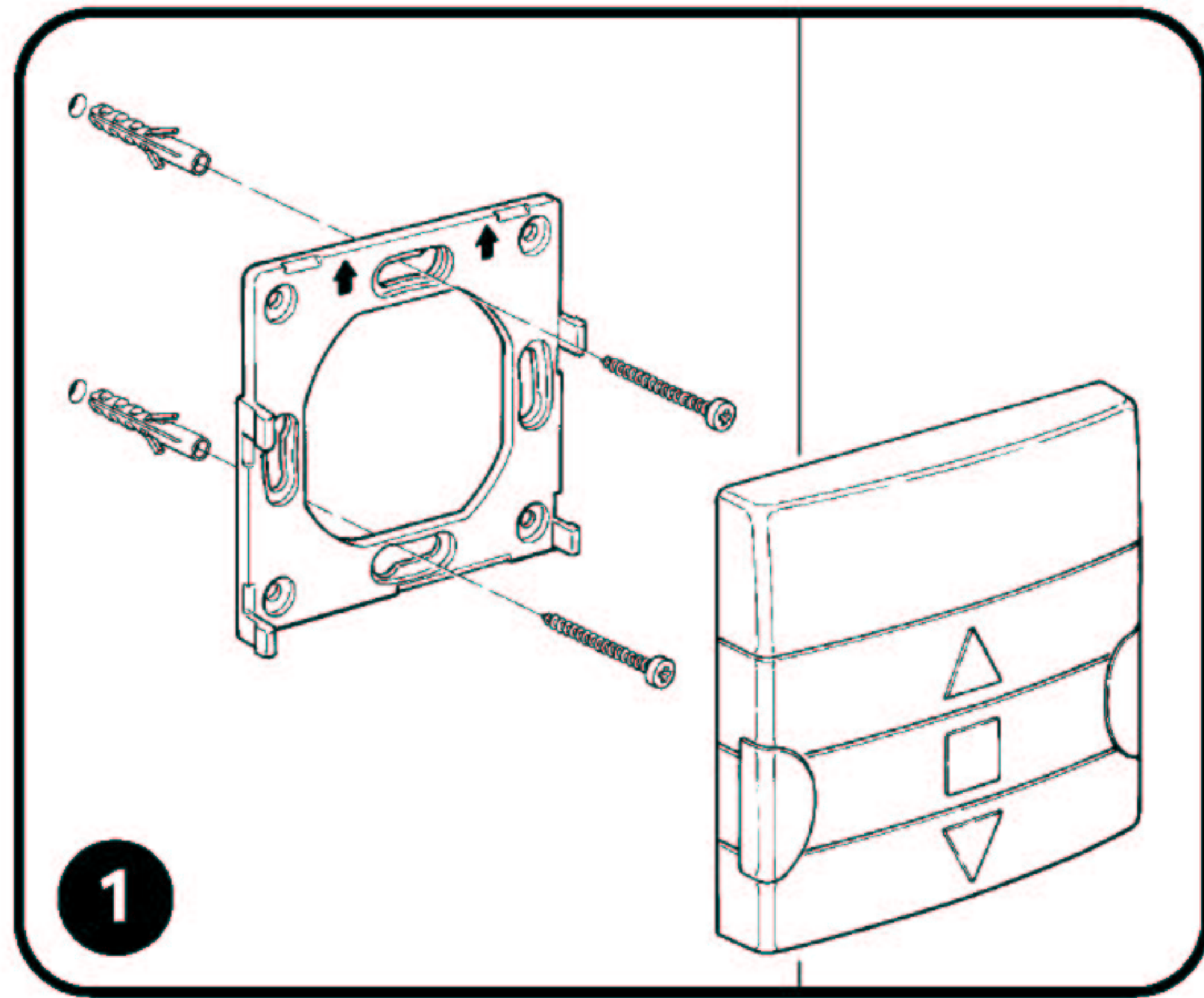
### Dichiarazione di Conformità

#### Declaration of conformity

La Ditta NICE S.p.a. dichiara che i prodotti NICE S.p.A. declares that the products ERGO6 e PLANO6 sono conformi alla Direttiva ERGO6 and PLANO6 comply with the 99/05/CE seguendo l'allegato III. EEC Directive 99/05, attachment III.

Oderzo, (Amministratore Delegato)  
li 18 Settembre 2001 (General manager)

Lauro Buoro



Nice, Oderzo TV Italia  
Via Pezza Alta, 13 Z. I. Rustignè  
Tel. +39.0422.85.38.38  
Fax +39.0422.85.35.85

info@niceforyou.com  
http://www.niceforyou.com

耐氏中国 Nice China

Shanghai P.R.China  
Golden Bridge Mansions  
2077 Yanan Xi Road, 200336  
TEL+86.21.5257.0634  
FAX+86.21.6219.2988  
info@niceforyou.com.cn



IST 108 4853 REV.00



COMPANY  
WITH QUALITY SYSTEM  
CERTIFIED BY DNV  
—ISO 9001—



遥控器



# ergo6 plano6

Instructions and warnings for users

使用说明与注意事项

### GB Checking and replacing the battery

To replace the battery, proceed as indicated in the figure. 2/3

**Warnings** This product may contain polluting substances; do not dump.

#### Technical specifications

Power input	: 6 Vdc with 2 CR2430 lithium batteries
Frequency	: 433.92MHz ±100 KHz
Radiated power	: estimated at approx. 1 mW
Coding	: 52 Bit rolling code FLOR
Working temperature	: -20°C ÷ 70°C

Nice S.p.A. reserves the right to modify its products without any notice.

### 中文 检查并更换电池

更换电池，过程如图2、图3所示。

**警告** 本产品可能含有污染成份，请勿随意丢弃。

#### 技术参数

电源	: 2节6Vdc CR2430锂电池
频率	: 433.92MHz ± 100 KHz
辐射功率	: 大约1mW
编码	: FLOR 52位滚码
工作温度	: -20°C ÷ 70°C

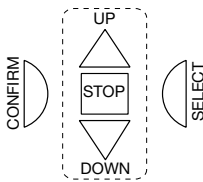
产品如有变更，恕不另行通知。Nice保留最终解释权。

## GB Description

ERGO6 and PLANO6 are radio transmitters for the remote control of the "NEO" series of tubular motors with built-in radio receivers and the "TT" series of MINDY control units. They use a transmission frequency of 433.92 MHz and rolling code technology to ensure maximum security. Their estimated range is 200m in the open and 35m inside buildings. These transmitters can control up to 6 automation units, either separately or at the same time. By unit we mean one or more automation devices linked together by the same control logic. For example, the 2 rolling shutters in the kitchen may belong to one unit, or all the awnings on the northern wall of a house may belong to another unit.

Led	Unit	Automation device
●○○○○○	1°	2 rolling shutters in the kitchen
○●○○○○	2°	3 rolling shutters in the living room
○○●○○○	3°	1 rolling shutter in the bathroom
○○○○●○	4°	4 rolling shutters in the bedrooms
○○○○○●	5°	1 awning facing East
○○○○○●	6°	1 awning facing North

TRANSMISSION BUTTONS



## Installing Plano

PLANO6 should not be installed near metal structures, which could reduce its range, together with a reduction in the battery charge. Before installing PLANO6, therefore, check the operating range is adequate.

## Memorising the transmitters

Before starting memorisation, select the unit to which the receiver corresponds on the transmitter. If a unit includes more than one automation device, repeat the operation for each of these. Programming via radio may be done on all the receivers within the range of the transmitter; only the one involved in the operation should be kept switched on, therefore. All the memorisation sequences must be completed within the programmed time limits.

### Memorising the first transmitter (if no transmitter has been entered into the memory of the receivers, the first one should be entered as follows)

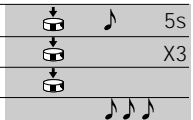
- As soon as the receiver is powered, 2 long beeps will sound \*\*
- Within 5 seconds press and hold down button ■ of the transmitter (for approx. 3 seconds)
- Release button ■ when you hear the first of the 3 beeps confirming memorisation



\*\* If the receiver already contains codes, 2 short beeps will be heard when it is switched on; in this case, proceed with the instructions shown in the following table.

### Memorising other transmitters (when one or more transmitters have already been memorised, others may be enabled as follows)

- Press and hold down button ■ of the new transmitter until you hear a beep (after about 5 seconds)
- Press button ■ of a previously enabled transmitter slowly three times (old)
- Press button ■ of the new transmitter again.



At the end, 3 beeps will indicate that the new transmitter has been memorised correctly.

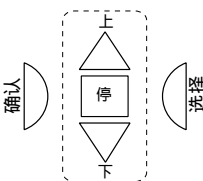
N.B.: If the memory is full (14 codes), 6 beeps will indicate that the transmitter can no longer be memorised.

## 中文说明

ERGO6和PLANO6是与“NEO”系列管状电机配套使用的遥控器，电机必须内置无线接收器或外接Mindy“TT”系列控制器。遥控器发射频率433.92MHz，并且采用滚码技术保证最大的安全性。发射范围在空旷处达到200米，室内35米。可分别或同时控制最多6个自动单元。我们这里所说的“自动单元”是指，一个或多个具有相同控制逻辑的自动装置。例如，厨房里的两个卷帘窗可以属于同一单元，或者所有朝北的遮阳篷属于另一单元。

Led	单元	自动装置
●○○○○○	1°	厨房里的2个卷帘窗
○●○○○○	2°	起居室里3个卷帘窗
○○●○○○	3°	浴室里的1个卷帘窗
○○○○●○	4°	卧室里的4个卷帘窗
○○○○○●	5°	1个朝东的遮阳篷
○○○○○●	6°	1个朝北的遮阳篷

遥控器按键



## 安装 Plano

PLANO6不能安装在金属结构附近，这会降低它的有效范围，同时也会使用的电池的电量。安装PLANO6之前检查发射范围是否足够。

## 存储遥控器

存储前，选择接收器对应的遥控器单元。如果一个单元包括多个自动装置，对每个自动装置重复上述操作。在遥控器发射范围内，无线编程对所有的接收器都有效；因此仅对要操作的装置通电。所有的存储过程必须在编程时限内完成。

### 存储第一个遥控器（如果接收器内存中还没有存储遥控器，第一个存储过程如下）

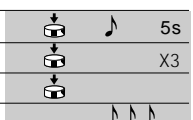
- 接收器一通电，就会发出两声长提示音“哔哔”\*\*
- 5秒内按住遥控器上的■键（大约3秒钟）
- 在您听到确认存储的3声蜂鸣后，松开■键。



\*\* 如果接收器中已经存有遥控器编码，通电后发出的提示音是两声短音；如果是这样，按下面的表格进行操作。

### 存储其它遥控器（如果接收器内存中已有一个或多个遥控器，其它遥控器的存储过程如下）

- 按住新遥控器上的■键直到响起“哔”的一声（大约5秒后）
- 按3下一个已经存储的遥控器（老的）上的■键
- 再次按下新遥控器上的■键。



最后会响起3声蜂鸣，确认新的遥控器已被正确存储。

注意：如果内存已满（14个遥控器编码），将会响起6声蜂鸣，表明不能存入更多的遥控器。

## Using the transmitters

### Selecting one of the 6 available units

- Press the Select button several times until the LED moves to the chosen unit.
  - Press the relative transmission button to send the command to the receiver.
- The last unit used will remain loaded in the memory. Press one of the transmission buttons to send commands directly

### Selecting a multiple unit

- Press the Select button several times until the LED moves to the 1st chosen unit.
  - Confirm the unit by pressing the Confirm button. The LED begins flashing to indicate that the unit has been selected.
  - Repeat the two previous steps to select other units
- Remove a selected unit by pressing the Select button until the flashing LED moves to the unit, then press the Confirm button.
- Send the command to the receiver by pressing the relative transmission button
- After transmission, the multiple unit configuration will be automatically entered in a memory sector containing the last 8 multiple units used.

### Loading a multiple unit selection from memory

- Press the Confirm button several times until the required multiple unit configuration appears on the LED's.
- After loading the multiple unit, press the required transmission button to send the command to the receiver

## 使用遥控器

### 选择六个可用单元中的一个

- 按几下选择键，直到与所选单元对应的LED亮起。
  - 撤遥控器相关按键，发送命令给接收器。
- 最后一个使用的单元，将保留在内存中。撤遥控器按键，可以直接发送命令。

### 选择多个单元

- 按几下选择键，直到第一个选中单元对应的LED亮起。
  - 按确认键确认。LED开始闪烁，表明该单元已被选中。
  - 重复上述两步，选择其它单元。
- 删除所选单元：撤选择键，直至该单元对应的LED亮起，再按确认键。

- 撤遥控器相关按键，发送命令给接收器。
- 发送完成后，多单元配置将被自动存储，内存中存储最后使用的8个多单元配置。

### 从内存中载入一个多单元配置

- 按几下确认键，直到LED显示所要求的多单元配置。
- 载入多单元配置后，撤要求的遥控器按键，发送命令给接收器。